



Cauca

Regional Specialty Coffee



Syphax Coffee

Cauca

The department of Cauca has one of the most fascinating natural features in Colombia, the birth of the central and western mountain ranges of the country and the Cauca and Magdalena rivers, making it a territory with abundant water and agricultural wealth.

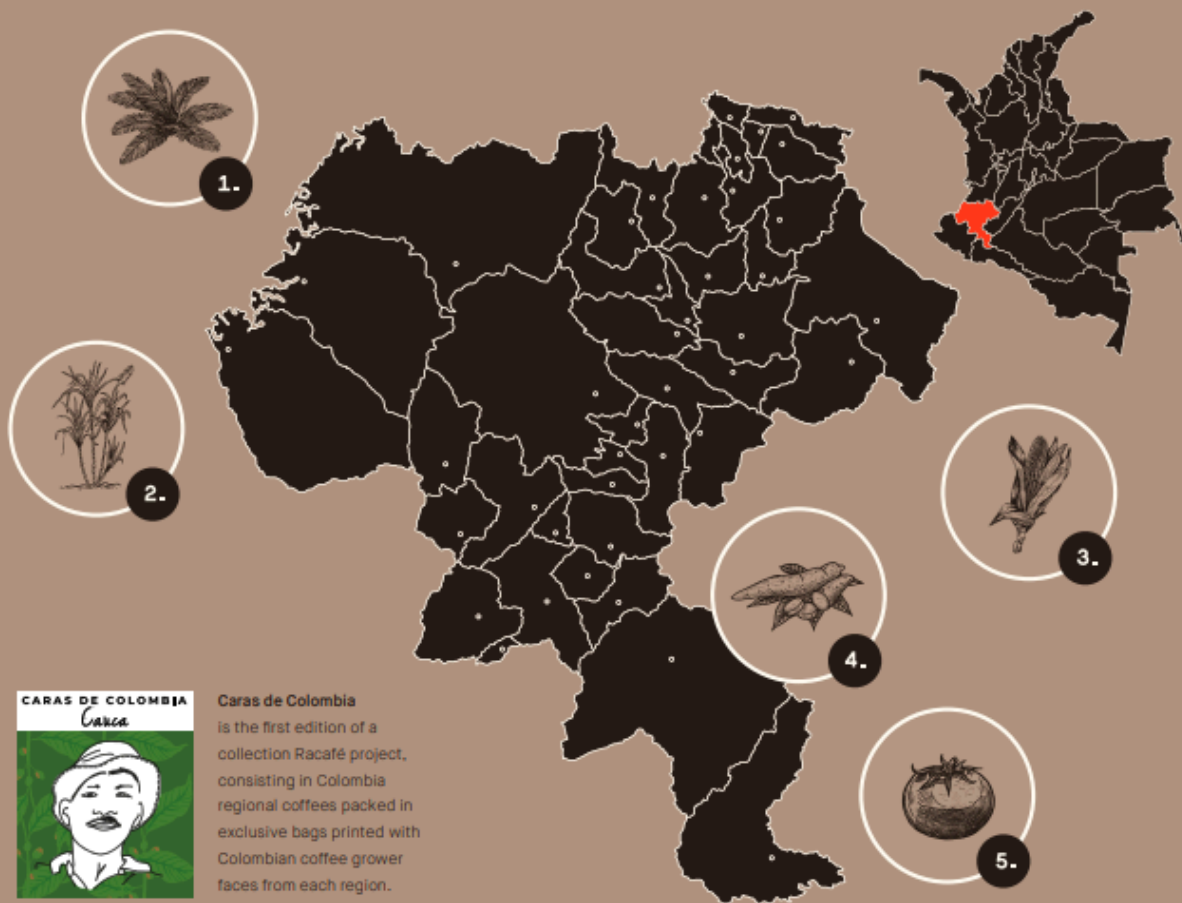
Located in the southwest region of Colombia, Cauca borders the departments of Valle del Cauca, Tolima, Huila, Caquetá, Putumayo and Nariño, as well as the Pacific Ocean. This region has rainforests, basins and volcanoes, as well as natural parks and a diversity of crops such as sugar cane and panela cane, potato, corn, yucca, beans, tomato and coffee, which is produced in the undulating slopes of Cauca, which are also amazing landscapes.

Thanks to the Andes Mountain Range crossing through Cauca and the protection in the well-known plateau of Popayán, there are homogeneous climatic and altitudinal features that are ideal for giving birth to one of the most outstanding coffees of Colombia.

Syphax Coffee

Other agricultural products

- 1. Figue
- 2. Sugar Cane
- 3. Corn
- 4. Yuca
- 5. Tomato



CARAS DE COLOMBIA

Cauca



Caras de Colombia

is the first edition of a collection *Racafé* project, consisting in Colombia regional coffees packed in exclusive bags printed with Colombian coffee grower faces from each region.



Agro-ecological Data

Altitude:

1100 – 1700 masl

Temperature:

19° C

Annual Rainfall:

1700 - 2070 mm

Botanical Cultivars:

Caturra 41%, Castillo 56%
Typica 2,7%

Wet Milling Process:

Traditional washed

Soil characteristics:

Volcanic ashes



Syphax Coffee

Coffee Availability

Main Crop

March

Fly Crop

October

Main Crop

April

Fly Crop

November

Main Crop

May

Fly Crop

December

Main Crop

June

Fly Crop

January

Cup Profile:

Flowery and milk caramel fragrance and aroma. It presents low acidity but really balanced. Its body is medium-high creamy which combines perfectly with molasses, floral and vanilla notes.

